

April 22, 2008

TO: John F. Gunion, Chair
Graduate Council

FROM: André Knoesen, PRC Chair



RE: Reduction of Workload for 2009-2010, and Proposal for rescheduling of reviews to even out the workload in future years

The Program Review Committee (PRC) has conducted a study of the workload associated with graduate reviews. As a result of this study, PRC has immediately implemented a change in the review of programs for 2009-2010. This was done to reduce the workload on the PRC support staff for the reviews that year. Instead of the onsite reviews taking place in the 2008-2009 academic year, the onsite reviews for Electrical & Computer Engineering, Computer Science and Civil & Environmental Engineering will be scheduled for Fall 2009. Given that this was a time critical issue, and after discussing the matter with you, it was decided to take this action without the approval of Graduate Council as a whole.

We can also propose a revised schedule of reviews that should even out the future workload. We quantify the average workload by the combined workload on the programs being reviewed and the PRC support staff for reviews. For example, in some years there will be reviews of many small programs. In such an instance, the workload on the PRC supportive staff will be high, but low for the programs. In another year there will be a few reviews of large programs and then the situation will be reversed. In the manner by which we quantify the workload, on average the workload variations are minimized.

The existing review schedule produces large swings in the workload. At present all graduate programs are reviewed on an 8 year cycle (and this does not need to change). The origin of the problem correlates with about 7 programs that confer degrees to about 22% of the graduate students.¹ Figure 1 shows the distribution of the number of students graduating from the UC Davis graduate programs in 2006. Also shown on the figure is a workload estimate (see caption for details of computation). The “red category” indicates the seven programs dominating the workload.

¹ Source of data:

<http://www.gradstudies.ucdavis.edu/publications/conferred.cfm?type=excel&rptno=10>

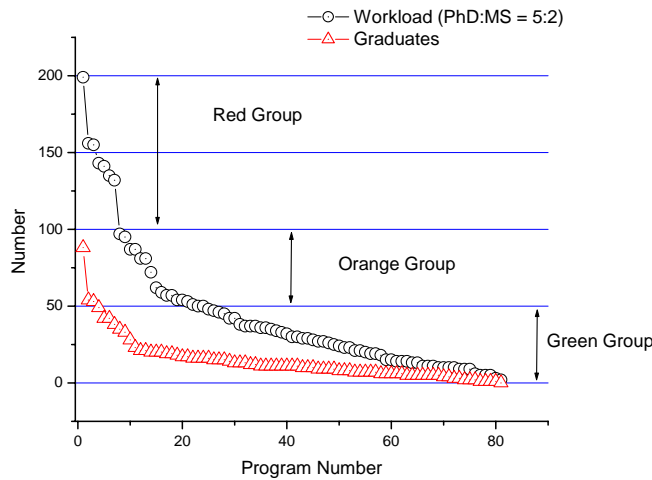


Figure 1: Conferred graduate degrees in 2006 per graduate program with associated workload. A three year running average quantifies graduate degrees conferred by program. A Ph.D. student receives a weight of 5 and a Master's degree student a weight of 2.

The number of graduate reviews that are conducted by year is summarized in Figure 2. The workload per year, calculated as described above, is shown in Figure 3, and it shows the problem. It clearly shows that the existing schedule causes large workload variation. Given the current budget and related resources, the problem is particularly acute in the 2008-2009.

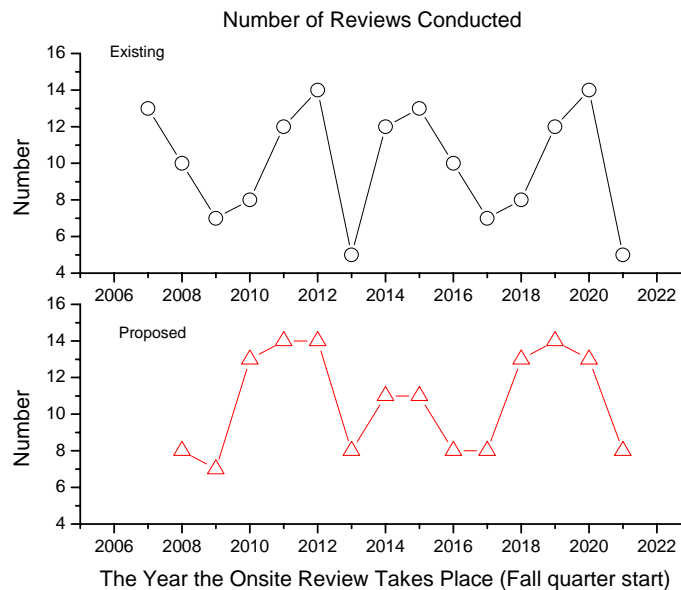


Figure 2: The number of graduate reviews that are conducted by year.

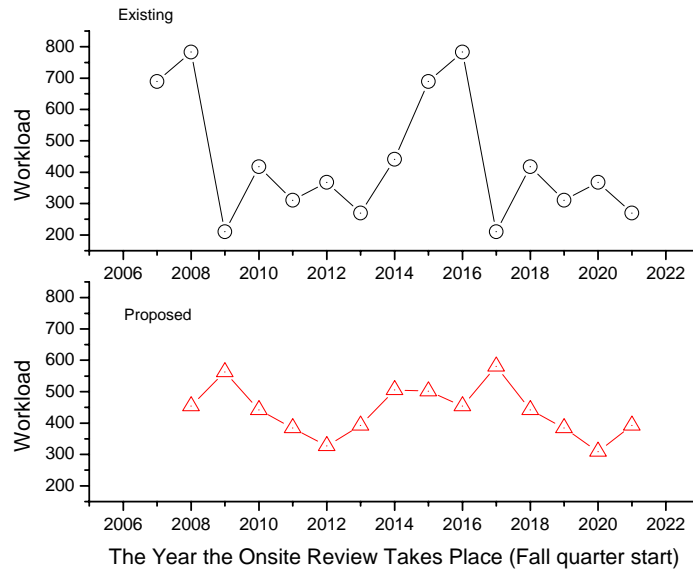


Figure 3: Workload per year quantified by a three year running average of graduate degrees conferred per program. A Ph.D. student receives a weight of 5 and a Master’s degree student a weight of 2.

The revised schedule is in Appendix A. By delaying and in some cases moving a review up one year from its current schedule, the workload is more evenly distributed. An exception to the one year rule was the review of Dramatic Art that was postponed for two years. Since the review of Performance Studies is moved up one year, these two programs are now reviewed in the same review cycle. A summary of proposed changes, in relation to the existing schedule is given below. The outcome of the corrective action is shown in Figures 2 and 3. It will have the immediate benefit of drastically reducing the workload in 2008-2009 that is associated with the scheduling of the reviews.

The review schedule of the Designated Emphases (DEs) has also been reviewed. PRC has already initiated the review of “Critical Theory”, and we would like this review to be completed in 2009-2010. Instead of reviewing “Feminist Theory and Research” and “Social Theory and Comparative History” next year, their review have been delayed by one year. The proposed schedule for the DEs is in Appendix B.

Summary of Changes to Existing Schedule in Order to Balance Workload:

Anthropology	Reschedule from 2009 to 2010
Atmospheric Science	Reschedule from 2010 to 2011
Biophysics	Reschedule from 2014 to 2013
Biostatistics	Reschedule from 2014 to 2013
Chemistry	Reschedule from 2010 to 2011
Civil & Environmental Engineering	Instead of Academic year 2008-2009, the review will take place Fall 2009
Computer Science	Instead of Academic year 2008-2009, the review will take place Fall 2009
Comparative Pathology	Reschedule from 2018 to 2017
Dramatic Art	Reschedule from 2009 to 2011 ²
Ecology	Reschedule from 2013 to 2014
Education, MA & PHD	Reschedule from 2015 to 2014
Education-Credential/Master's	Reschedule from 2012 to 2013
Electrical & Computer Engineering	Instead of Academic year 2008-2009, the review will take place Fall 2009
Geology	Reschedule from 2009 to 2010
Hydrologic Science	Reschedule from 2011 to 2012
Mechanical & Aeronautical Engineering	Reschedule from 2015 to 2014
Nutritional Biology	Reschedule from 2014 to 2015
Performance Studies	Reschedule from 2012 to 2011
Political Science	Reschedule from 2011 to 2010
Soils and Biogeochemistry	Reschedule from 2009 to 2010
Transportation Technology & Policy	Reschedule from 2011 to 2010

cc. Dean Gibeling
Program Review Committee

² Dramatic Art is postponed two years and Performance Studies is moved up one year, such that the two programs are reviewed in the same review cycle.

Program	Initiation Notice	Self-Review Date	Next Onsite Review	Following Onsite Review	Category	Comment
Agricultural & Resource Economics	Fall 2007	July 2008	2008 -2009	2016 - 2017	Orange	
Avian Sciences	Fall 2007	July 2008	2008 -2009	2016 - 2017	Green	
Genetics	Fall 2007	July 2008	2008 -2009	2016 - 2017	Green	
Mathematics	Fall 2007	July 2008	2008 -2009	2016 - 2017	Green	
Microbiology	Fall 2007	July 2008	2008 -2009	2016 - 2017	Green	
Pharmacology & Toxicology	Fall 2007	July 2008	2008 -2009	2016 - 2017	Orange	
Physics	Fall 2007	July 2008	2008 -2009	2016 - 2017	Orange	
Plant Biology	Fall 2007	July 2008	2008 -2009	2016 - 2017	Orange	
Civil & Environmental Engineering	Fall 2007	Mar-08	Fall 2009	2017 - 2018	Red	
Computer Science	Fall 2007	Mar-08	Fall 2009	2017 - 2018	Red	
Electrical & Computer Engineering	Fall 2007	Mar-08	Fall 2009	2017 - 2018	Red	
Cell & Developmental Biology	Spring 2008	July 2009	2009 -2010	2017 - 2018	Green	
Comparative Pathology	Spring 2008	July 2009	2009 -2010	2017 - 2018	Orange	
Forensic Science	Spring 2008	July 2009	2009 -2010	2017 - 2018	Green	
Neuroscience	Spring 2008	July 2009	2009 -2010	2017 - 2018	Green	
Anthropology	Spring 2009	July 2010	2010 -2011	2018 - 2019	Orange	
Applied Science Engineering	Spring 2009	July 2010	2010 -2011	2018 - 2019	Orange	
Biochemistry & Molecular Biology	Spring 2009	July 2010	2010 -2011	2018 - 2019	Orange	
Biological Systems Engineering	Spring 2009	July 2010	2010 -2011	2018 - 2019	Green	
Communications	Spring 2009	July 2010	2010 -2011	2018 - 2019	Green	
Geology	Spring 2009	July 2010	2010 -2011	2018 - 2019	Green	
Integrated Pest Management	Spring 2009	July 2010	2010 -2011	2018 - 2019	Green	
Materials Science Engineering	Spring 2009	July 2010	2010 -2011	2018 - 2019	Green	
Political Science	Spring 2009	July 2010	2010 -2011	2018 - 2019	Green	
Population Biology	Spring 2009	July 2010	2010 -2011	2018 - 2019	Green	
Sociology	Spring 2009	July 2010	2010 -2011	2018 - 2019	Green	
Soils and Biogeochemistry	Spring 2009	July 2010	2010 -2011	2018 - 2019	Green	Keep Soils, Atmos Sc and Hydy separate
Transportation Technology & Policy	Spring 2009	July 2010	2010 -2011	2018 - 2019	Green	

Animal Biology	Spring 2010	July 2011	2011 -2012	2019 - 2020	Green	
Applied Mathematics	Spring 2010	July 2011	2011 -2012	2019 - 2020	Green	
Atmospheric Science	Spring 2010	July 2011	2011 -2012	2019 - 2020	Green	Keep Soils, Atmos Sc and Hydy separate
Chemistry	Spring 2010	July 2011	2011 -2012	2019 - 2020	Red	
Community Development	Spring 2010	July 2011	2011 -2012	2019 - 2020	Green	
Design	Spring 2010	July 2011	2011 -2012	2019 - 2020	Green	
Dramatic Art	Spring 2010	July 2011	2011 -2012	2019 - 2020	Green	Keep with Performance Studies
Educational Leadership	Spring 2010	July 2011	2011 -2012	2019 - 2020	Green	
Exercise Science	Spring 2010	July 2011	2011 -2012	2019 - 2020	Green	
German	Spring 2010	July 2011	2011 -2012	2019 - 2020	Green	
Horticulture & Agronomy	Spring 2010	July 2011	2011 -2012	2019 - 2020	Green	
International Ag Dev	Spring 2010	July 2011	2011 -2012	2019 - 2020	Green	
Native American Studies	Spring 2010	July 2011	2011 -2012	2019 - 2020	Green	
Performance Studies	Spring 2010	July 2011	2011 -2012	2019 - 2020	Green	Keep with Dramatic Art
Agricultural & Environmental Chemistry	Spring 2011	July 2012	2012 -2013	2020 - 2021	Green	
Comparative Literature	Spring 2011	July 2012	2012 -2013	2020 - 2021	Green	
Food Science	Spring 2011	July 2012	2012 -2013	2020 - 2021	Green	
French	Spring 2011	July 2012	2012 -2013	2020 - 2021	Green	
Health Informatics	Spring 2011	July 2012	2012 -2013	2020 - 2021	Green	
History	Spring 2011	July 2012	2012 -2013	2020 - 2021	Orange	
Hydrologic Sciences	Spring 2011	July 2012	2012 -2013	2020 - 2021	Green	Keep Soils, Atmos Sc and Hydy separate
Joint Program in Ecology SDSU	Spring 2011	July 2012	2012 -2013	2020 - 2021	Green	
Master of Laws	Spring 2011	July 2012	2012 -2013	2017 - 2018	Green	PRC accepts ABA report; on 7 year cycle
Maternal & Child Nutrition	Spring 2011	July 2012	2012 -2013	2020 - 2021	Green	
Music	Spring 2011	July 2012	2012 -2013	2020 - 2021	Green	
Philosophy	Spring 2011	July 2012	2012 -2013	2020 - 2021	Green	
Statistics	Spring 2011	July 2012	2012 -2013	2020 - 2021	Green	
Textiles	Spring 2011	July 2012	2012 -2013	2020 - 2021	Green	

Biomedical Engineering	Spring 2012	July 2013	2013 -2014	2021 - 2022	Orange
Biophysics	Spring 2012	July 2013	2013 -2014	2021 - 2022	Green
Biostatistics	Spring 2012	July 2013	2013 -2014	2021 - 2022	Green
Chemical Engineering	Spring 2012	July 2013	2013 -2014	2021 - 2022	Green
Education-Credential/Master's	Spring 2012	July 2013	2013 -2014	2021 - 2022	Red
Entomology	Spring 2012	July 2013	2013 -2014	2021 - 2022	Green
Epidemiology	Spring 2012	July 2013	2013 -2014	2021 - 2022	Green
Viticulture and Enology	Spring 2012	July 2013	2013 -2014	2021 - 2022	Green
Child Development	Spring 2013	July 2014	2014 -2015	2022 - 2023	Green
Clinical Research	Spring 2013	July 2014	2014 -2015	2022 - 2023	Green
Cultural Studies	Spring 2013	July 2014	2014 -2015	2022 - 2023	Green
Ecology	Spring 2013	July 2014	2014 -2015	2022 - 2023	Red
Education - (M.A.-General)	Spring 2013	July 2014	2014 -2015	2022 - 2023	Green
Education (PHD)	Spring 2013	July 2014	2014 -2015	2022 - 2023	Orange
Geography	Spring 2013	July 2014	2014 -2015	2022 - 2023	Green
Human Development	Spring 2013	July 2014	2014 -2015	2022 - 2023	Green
Immunology	Spring 2013	July 2014	2014 -2015	2022 - 2023	Green
International Commercial Law	Spring 2013	July 2014	2014 -2015	2022 - 2023	Green
Mechanical & Aeronautical Engineering	Spring 2013	July 2014	2014 -2015	2022 - 2023	Red
Animal Behavior	Spring 2014	July 2015	2015 -2016	2023 - 2024	Green
Art	Spring 2014	July 2015	2015 -2016	2023 - 2024	Green
Art History	Spring 2014	July 2015	2015 -2016	2023 - 2024	Green
Economics	Spring 2014	July 2015	2015 -2016	2023 - 2024	Orange
English	Spring 2014	July 2015	2015 -2016	2023 - 2024	Orange
Linguistics	Spring 2014	July 2015	2015 -2016	2023 - 2024	Green
Molecular Cell & Integrative Physiology	Spring 2014	July 2015	2015 -2016	2023 - 2024	Orange
Nutritional Biology	Spring 2014	July 2015	2015 -2016	2023 - 2024	Orange
Plant Pathology	Spring 2014	July 2015	2015 -2016	2023 - 2024	Green
Psychology	Spring 2014	July 2015	2015 -2016	2023 - 2024	Orange
Spanish	Spring 2014	July 2015	2015 -2016	2023 - 2024	Green

DE Program Name	Initiation Notice	Next Scheduled Review
Critical Theory	Fall 2007	2009-2010
Feminist Theory and Research	Fall 2007	2010-2011
Social Theory & Comparative History	Spring 2008	2010-2011
Native American Studies	Spring 2009	2011-2012
Biophotonics	Spring 2010	2011-2012
Biotechnology	Spring 2010	2011-2012
Second Language Acquisition	Spring 2010	2012-2013
African American and African Studies	Spring 2011	2012-2013
Studies in Performance Studies	Spring 2011	2012-2013
Biology of Vector-borne Diseases	Spring 2012	2013-2014
International and Community Nutrition	Spring 2012	2013-2014
Classics and the Classical Tradition	Spring 2013	2014-2015
Reproductive Biology	Spring 2013	2014-2015